

POLICY INNOVATION CENTRE

Gender & Inclusion Summit 2026

September 8th – 9th | Abuja, Nigeria

THEME:

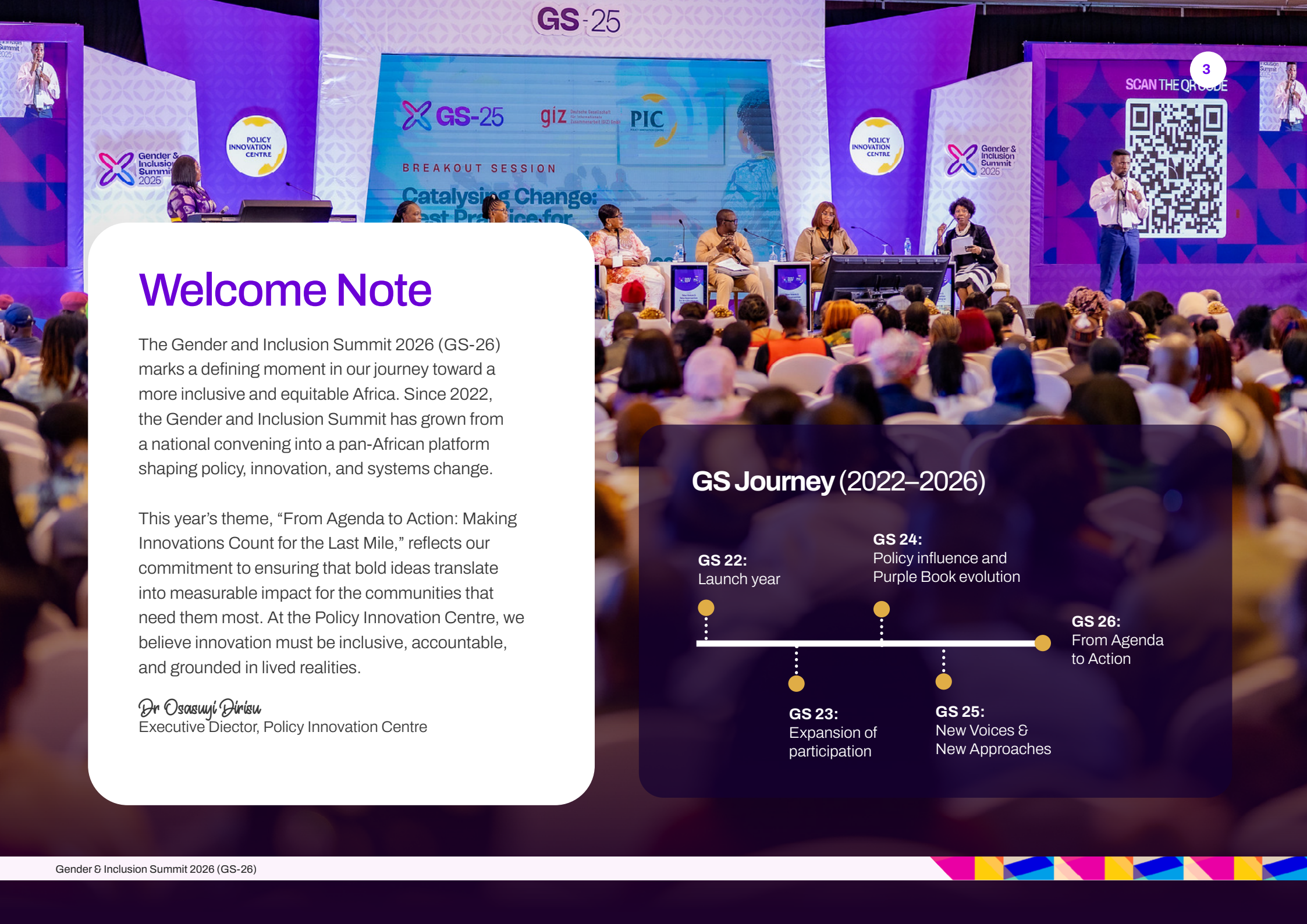
**From Agenda to Action:
Making Innovations Count for the Last Mile**



**Gender &
Inclusion
Summit**







Welcome Note

The Gender and Inclusion Summit 2026 (GS-26) marks a defining moment in our journey toward a more inclusive and equitable Africa. Since 2022, the Gender and Inclusion Summit has grown from a national convening into a pan-African platform shaping policy, innovation, and systems change.

This year's theme, "From Agenda to Action: Making Innovations Count for the Last Mile," reflects our commitment to ensuring that bold ideas translate into measurable impact for the communities that need them most. At the Policy Innovation Centre, we believe innovation must be inclusive, accountable, and grounded in lived realities.

Dr Osasunji Dirisu
Executive Director, Policy Innovation Centre

GS Journey (2022–2026)

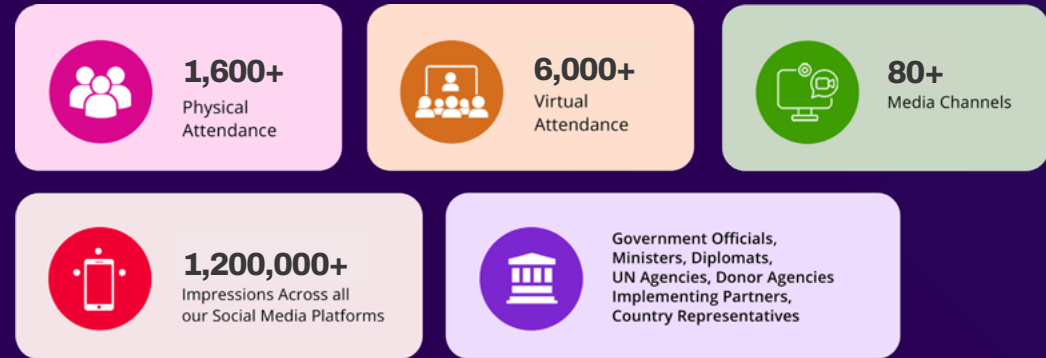


About the Summit

The Gender and Inclusion Summit was conceptualized in 2022 as annual event to provide an inclusive platform to explore transformative ways to advance gender equality, inclusion and gender responsive governance in Africa. The Summit aims to bring together cutting-edge gender-related research, innovation, and practice providing an opportunity for attendees to share perspectives, exchange ideas, learn and expand their networks for future policy and programmatic work. Through high-level dialogues, technical forums, innovation showcases, and co-creation workshops, the Summit fosters partnerships that translate knowledge into action and drive measurable progress across sectors.

Since its inception, the Summit has grown into one of Africa's most influential convenings on gender and inclusion, attracting thousands of participants from across the continent and beyond. Its impact is reflected in strengthened national policies, expanded innovation ecosystems, and the annual Purple Book, a curation of policy and program recommendations from the Gender and Inclusion Summit that guides governments and institutions in advancing gender-responsive development.

Gender & Inclusion Summit 2022/2023 Highlights

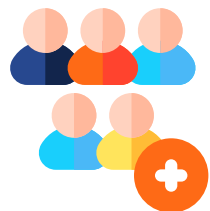


Gender & Inclusion Summit 2024 Highlights



GS-25 Highlights

ATTENDANCE – IN-PERSON

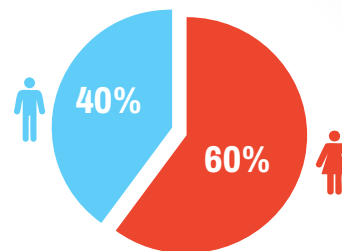


1612

Day 1 Attendance

1376

Day 2 Attendance



ATTENDANCE – VIRTUAL



3848+

Streamed Online

INCLUSION



>5%

...of attendees and
volunteers were persons
with disability

SPEAKERS & PANELISTS



159+

Speakers and
panelists

Academia

Celebrities

Military

Policymakers

Healthcare

Transportation

Advocacy coalitions

International Delegates

Executives



GS-26 Theme and Strategic Focus

GS-26 is anchored in the imperative to move from agenda to action by ensuring that innovations, policies, and commitments translate into measurable improvements in the lives of those furthest behind. The Summit focuses on strengthening the pathways that carry solutions from concept to scale, prioritising inclusive design, evidence, and accountability. It brings together leaders, innovators, and practitioners to co create practical roadmaps that will address structural barriers and expand access to essential services for women, youth, persons with disabilities, and underserved communities. At its core, GS-26 is a call to ensure that innovation delivers real value where it matters most: at the last mile.

Background and Context

Innovation is reshaping Africa's development landscape, offering new possibilities across education, health, agriculture, financial inclusion, and climate resilience. EdTech platforms are improving learning outcomes; digital health tools are expanding access to care; and climate smart agriculture and mobile advisory services are helping smallholder farmers adapt to shocks. Yet these gains remain uneven. Rural, low income, and conflict affected communities continue to rely on under resourced systems, while unreliable power, limited connectivity, affordability constraints, and climate pressures hinder scale.^{1,2} These gaps contribute to persistent inequities, including sub Saharan Africa's disproportionate share of global child stunting.³ The challenge is no longer the absence of ideas, but the failure to translate promising innovations into equitable, measurable impact. Without intentional design and governance, innovations risk reinforcing exclusion rather than reducing it. GS-26 responds by centring last mile realities and embedding accountability into every conversation and commitment.

Summit Goal

GS-26 aims to accelerate inclusive development by championing actionable, data driven innovations that break down structural barriers and deliver impact where it is needed most. The Summit seeks to ensure that transformative solutions reach last mile communities: women, youth, persons with disabilities, rural households, and other underserved groups, by **shifting decisively from dialogue to delivery and from commitment to implementation.**



1. World Bank. (2016). Poverty in a rising Africa. World Bank. <https://documents1.worldbank.org/curated/en/049241467996692059/pdf/103948-PUB-POVERTY-AFRICA-Box364870B-PUBLIC.pdf>
2. International Labour Organization. (2023). Promoting transition to formality in Africa. ILO. <https://www.ilo.org/resource/news/more-60-cent-world%E2%80%99s-employed-population-are-informal-economy>
3. <https://data.unicef.org/wp-content/uploads/2025/07/IME-Brochure-UNSDG-regions-2025-v23.pdf>

Summit Objective and Delivery Strategy

Summit Objectives

GS-26 is structured to drive measurable, system level change by focusing on four clear objectives:

01. **Strengthen evidence driven decision making** across health, education, economic inclusion, governance, security, and climate resilient livelihoods, ensuring that policies and investments reflect last mile realities and the lived experiences of underserved groups.
02. **Accelerate the scale up of inclusive innovations** by spotlighting solutions that are gender responsive, affordable, locally adaptable, and capable of delivering measurable impact for women, youth, persons with disabilities, and rural communities.
03. **Mobilise high level commitments and catalytic partnerships** among governments, private sector leaders, development partners, academia, investors, and community institutions to unlock gender inclusive financing and drive coordinated action toward shared outcomes.
04. **Strengthen implementation and accountability systems** by equipping stakeholders with practical tools, co created roadmaps, and an innovation to impact pipeline that supports the translation of ideas, policies, and prototypes into sustainable, large scale impact.



GS-26 Tracks

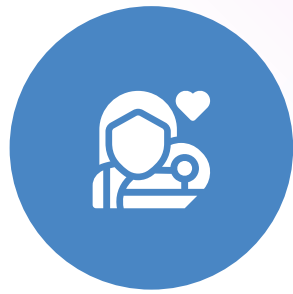
THEME

Gender-Based Violence (GBV)

Economic Inclusion (EI)

Health

Education



FOCUS

Prevention & response systems; access to justice; survivor-centred services; social norms change

Decent work, digital tools, access to markets/finance, green jobs, legal reforms

Safe pregnancy, childbirth, Maternal, child nutrition

Girls' access to quality learning; STEM; digital skills; school-related GBV

JUSTIFICATION

Through collaborative ideation sessions, models that speak to accessibility of GBV prevention and response services for survivors as well as male engagement in GBV processes will be adopted.

This track will explore innovative livelihood opportunities for women and marginalized groups, while expanding pathways to sustainable employment through inclusive and enabling reforms.

GS-26 will prioritise digital tools, community health workers, strengthened referral systems, skilled birth attendance, and local food systems to reduce delays in care, improve maternal and newborn health outcomes, and reduce stunting and malnutrition among children under five.

GS-26 will advance implementation-focused and inclusive learning innovations, including offline-first EdTech, community learning hubs, and STEM pathways for girls, that strengthen equitable access to quality education and ensure that no learner is excluded due to geography, disability, or poverty.

SDG INDICATORS



THEME

Agriculture – Climate

Transportation

Security



FOCUS

Climate-smart agriculture; women’s access to climate finance, land, green tech

Safe, accessible mobility; inclusive transport systems; rural connectivity; women’s safety

Protection and safety in public spaces; civil-military engagement; conflict-responsive service delivery; community-level security architecture

JUSTIFICATION

Solutions that strengthen climate-resilient food systems, expand women’s access to land and finance, and support adaptive strategies for rural and smallholder farmers will be prioritized.

This track will focus on policies interventions and reforms that advance inclusive urban planning, address infrastructural gaps related to women’s mobility and safety, and strengthen rural connectivity.

Advance implementation-driven community security approaches, gender-responsive policies, and inclusive civil-military coordination models that strengthen public safety, build community trust, and improve protection for women, youth, and vulnerable populations most at risk.

SDG INDICATORS



Summit Forum

GS-26 is anchored around six high impact forums that function as the Summit's primary engines for delivery. Each forum convenes decision makers, innovators, and practitioners to convert evidence and insights into concrete commitments, partnerships, and implementation pathways. Designed for depth and action, the forums blend high level dialogue with technical working sessions, co creation labs, and structured partnership engagements to ensure that innovations reach the last mile and deliver measurable, gender responsive outcomes.



Economic Inclusion Forum

Focus: Women's Leadership | WEE | Education | Jobs | Agriculture & Climate



This forum convenes policymakers, private sector leaders, and innovators to advance women's economic participation and leadership. Through technical sessions and co creation workshops, it surfaces scalable solutions and produces actionable roadmaps and financing pathways that strengthen livelihoods and expand economic opportunity for women and youth.



Gender-Based Violence (GBV) Forum

Focus: Prevention | Justice | Survivor Services | Social Norms

This forum brings together government, civil society, justice actors, and security institutions to strengthen GBV prevention and response systems. It prioritises survivor centred approaches, innovative reporting tools, and community driven models, generating commitments that improve accountability and expand access to protection services.



Innovation Forum

Focus: Innovation Hub | Pitchathon | Deal Rooms | Tech Demos

A dynamic platform showcasing solutions across health, climate, mobility, GBV, and digital inclusion. Innovators pitch to investors and institutional partners, while curated Deal Rooms accelerate funding, adoption, and large scale implementation of high potential innovations.



Inclusive Digital Transformation Forum

Focus: Digital Inclusion | AI & Data Equity | EdTech | Digital Finance

This forum examines how inclusive digital infrastructure and responsible technology can close the gender digital divide. It explores AI governance, data equity, and digital finance models that expand access and opportunity for underserved communities.



Health Forum

Focus: Maternal Health | Child Nutrition | Reproductive Health | Last-Mile Care

This forum highlights innovations and policies that strengthen maternal and child health systems. It prioritises solutions that improve access, quality, and continuity of care—especially for rural, low income, and conflict affected communities.



Security Forum

Focus: Public Safety | Civil-Military Collaboration | Community Security

This forum examines inclusive security approaches that protect women, youth, and vulnerable groups. It elevates tools such as early warning systems, digital reporting, and community protection models, generating commitments to strengthen safety and coordinated response.

Program Overview

The GS-26 program is intentionally structured to guide participants through a sequenced journey, from ‘evidence and agenda setting’ to co-creation, commitment-making, and implementation planning. Each day is designed to deepen engagement, elevate new voices, and ensure that innovations showcased at the Summit translate into measurable last-mile impact.

Day Zero: Monday, September 7, 2026 Academic Summit & Pre-Summit Activities

Morning	<p>Academic Summit Oral and Poster Abstract Presentations. A dedicated space for researchers, academics, and graduate scholars to present evidence-based work on gender and inclusion themes.</p> <p>This year's Academia Summit will prioritise research that strengthens last-mile implementation, inclusive innovation, and gender-responsive systems change.</p>
Afternoon	<p>Poster Exhibition & Peer Review Structured review and dialogue sessions between abstract presenters, faculty, and thematic experts.</p>
Late Afternoon	<p>Call for Innovators — Innovation Hub Setup Innovators and exhibitors access the Innovation Hub space for setup and orientation.</p> <p>The Hub will also include onboarding for innovators participating in the Pitchaton and Deal Rooms, ensuring readiness for investor engagement.</p>

Day One: Tuesday, September 8, 2026

Opening Ceremony | High-Level Plenaries | Economic Empowerment | Innovation | CEO Roundtable

Morning	<p>Summit Flag-Off: Opening Ceremony Official opening of GS-26. Welcomes country leaders, ministers, high commissioners, traditional rulers, First Ladies, and international development partners. Sets the tone for the Summit theme: From Agenda to Action.</p>
Mid-Morning	<p>High-Level Plenary: Security and Gender Ministerial and security leadership panel examining civil-military engagement, community-level protection architecture, and inclusive security frameworks.</p>
Mid-Morning	<p>Exhibition Booths Open — MSMEs & Partners Partners, innovators, and MSMEs officially open their exhibition stands. Networking and product showcases begin.</p>
Mid-Morning	<p>Gender Equity Wall Launch An interactive installation inviting all participants to document commitments and aspirations for gender equity.</p>
Afternoon	<p>Economic Inclusion Forum Co-creation workshops and roundtable on WEE, women in leadership, education, and agriculture. Facilitated by sectoral experts and partner organisations.</p>
Afternoon	<p>Health Forum Focuses on maternal mortality, child nutrition, and last-mile health innovations. Includes co-creation workshop and roundtable format.</p>
Afternoon	<p>Innovation Forum — Pitch-a-ton (Round 1) First round of innovation pitches across all thematic areas. Innovators present to judges comprising investors, policymakers, and sector experts.</p>
Evening	<p>CEO Roundtable (Invite Only) An exclusive, invite-only session bringing together chief executives, economic reform leaders, and senior development professionals to discuss private sector commitments to gender inclusion.</p>

Day Two: Wednesday, September 9, 2026
Opening Plenary | GBV Forum | Digital Transformation | Innovation Deal Rooms | High-Level Cocktail

Morning	<p>Opening Plenary Session Day Two keynotes and scene-setting for the day's thematic agenda. High-level commitments from partner governments and institutions.</p>
Morning	<p>High-Level Ministerial Panel Ministers and senior officials from across Africa engage on progress, gaps, and shared commitments toward gender-responsive governance and the SDGs.</p>
Late Morning	<p>GBV Forum Dedicated forum on gender-based violence — prevention, survivor-centred service delivery, digital reporting tools, and strengthening the legal and policy ecosystem.</p>
Afternoon	<p>Exhibition Booths & Networking Final exhibition period. Structured networking sessions among participants, partners, and innovators.</p>
Afternoon	<p>Inclusive Digital Transformation Forum Sessions on bridging the gender digital divide, AI ethics and data equity, digital finance for women, and EdTech solutions for last-mile learners.</p>
Afternoon	<p>Innovation Forum — Pitchaton Deal Rooms Curated deal room sessions where shortlisted innovators from the Pitchaton engage directly with funders, investors, and institutional partners.</p>
Evening	<p>Innovation Forum — Pitch-a-ton (Round 1) First round of innovation pitches across all thematic areas. Innovators present to judges comprising investors, policymakers, and sector experts.</p>
Evening	<p>GS-26 High-Level Partner's Cocktail A premium evening reception for VVIP pass holders, VIPs, sponsors, and distinguished guests — celebrating partnerships, recognising excellence, and setting the stage for continued action.</p>

Equity Begins at Home: Families as the Foundation for Gender and Inclusive S...

Post-Summit Deliverables

01

The Purple Book 2026:

A curated publication capturing GS-26's key policy recommendations, implementation pathways, and last-mile innovations, shared with governments, development partners, the private sector, and civil society across Africa and globally.

02

Sustained Advocacy:

PIC will advance Summit outcomes by supporting partners to implement commitments, strengthen systems, and embed inclusive innovations within national and institutional programs.

03

GS-26 Commitment Tracker:

A public platform documenting Summit commitments, timelines, responsible actors, and progress indicators. Updated quarterly to ensure accountability and inform the Purple Book 2026.

GS-26 Registration Tiers & Benefits

Access & Benefits	Leaders Pass	Access Pass
Price	₦150,000 (\$120)	₦50,000 (\$40)
Early Bird (Ends 31st July 2026)	₦99,999 (\$75)	₦29,999 (\$25)
PROGRAMME ACCESS		
Opening Ceremony & Summit Flag Off	✓	✓
High-Level Ministerial Plenaries	✓	✓
Access to GS26 Academic Conference	✓	—
Access to Learning Workshop	✓	—
VENUE & NETWORKING		
Access to Exhibition Foyer	✓	✓
Access to General Networking Areas	✓	✓
Pre-Scheduled Meetings via Event Platform	✓	✓
Access to Food Court	✓	—
PARTICIPATION & ENGAGEMENT		
Access to thematic Forums	✓	✓
Access to Pitchaton Sessions	✓	—
DIGITAL & DOCUMENTATION		
Digital Certificate of Participation	✓	✓
Digital Access to Select Summit Resources & Highlights	✓	✓
Digital Copy of the Purple Book 2026	✓	✓
Printed Summit Materials & Delegate Kit	✓	—

***Enjoy up to 10% preferred pricing when registering 5 or more delegates on Leaders Pass.**

[CLICK HERE FOR MORE INFO](#)

Why Should You Partner With This Summit?

By partnering with the Gender & Inclusion Summit 2026 (GS-26), your organization becomes part of a growing movement advancing inclusive development, gender-responsive leadership, and equitable opportunities across Africa.

Your partnership helps power:

01. A high-impact platform amplifying new voices, bold ideas, and innovative approaches for building a more inclusive society

02. Multi-sector collaboration among policymakers, development institutions, private sector leaders, civil society, youth leaders, creatives, and grassroots actors driving gender-inclusive change

03. Action-oriented policy engagement through the Purple Book, policy hackathons, learning sessions, and research presentations

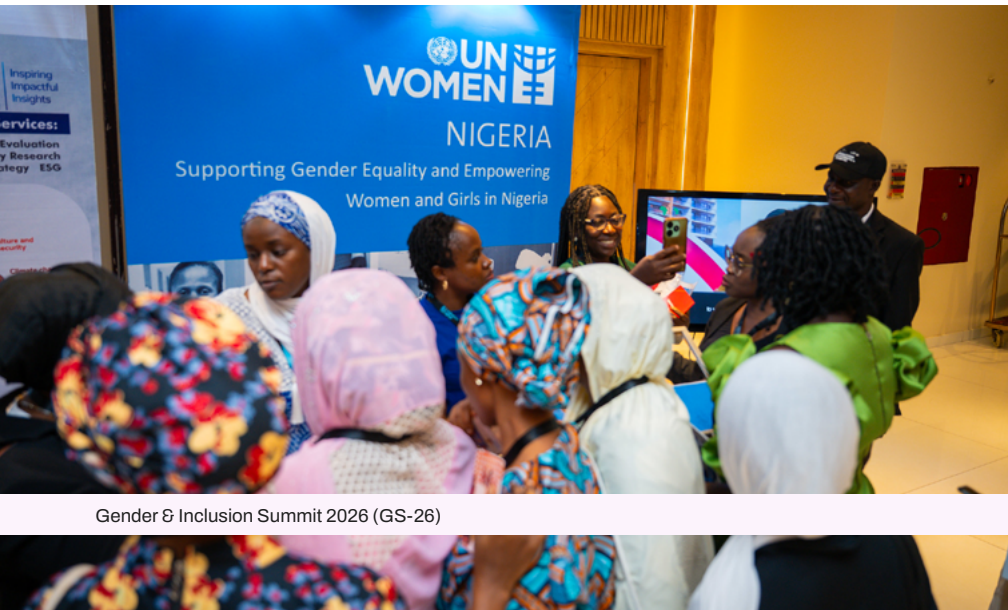
04. Participation from marginalised and underserved communities, ensuring women, youth, persons with disabilities, rural populations, and other excluded groups are represented.

Your partnership goes beyond sponsoring an event. It contributes to building long-term systems, policies, partnerships, and community-driven solutions that strengthen inclusion, reduce inequality, and accelerate sustainable development outcomes across Nigeria and Africa.

Access & Benefits	Diamond ₦40M	Platinum ₦25M	Emerald ₦15M	Gold ₦10M	Silver ₦5M
Partner's logo on all Summit materials, website & social media	✓	✓	✓	✓	✓
Products included in the Summit Package	✓	✓	✓	—	—
Media Features (TV / Radio) & CEO Interview	✓	✓	—	—	—
Goodwill Message / CEO Address at Plenary	✓	✓	—	—	—
Purple Book Feature (Full Page)	✓	—	—	—	—
Purple Book Feature (Half Page)	—	✓	—	—	—
Partner Spotlight throughout Summit	✓	✓	✓	—	—
Exclusive Ownership of a Plenary Session	✓	✓	—	—	—
Exclusive Ownership of a Breakout / Workshop Session	—	—	✓	✓	—
Exclusive Ownership of a Fireside Chat / Round-table	—	—	—	—	✓
Access to Ministerial & Policy Roundtables: Closed-door, high-level discussions	✓	✓	✓	—	—
Priority exhibition space	✓	✓	✓	—	—
Standard exhibition space	—	—	✓	✓	✓
Leaders Pass	4	3	2	2	2
Access Pass	4	3	3	2	3

Exhibition Booth

Access & Benefits	₦3M
Access & Benefits	✓
Standard booth space	✓
Customized and lighted booth with seamless branding	✓
Raised platform for power outlet and reliable internet access	✓
2 exhibitor badges for your team + 1 Access pass and 1 Leaders Pass	✓
Partner's logo on all Summit materials, website & social media as an exhibitor	✓



Summit Partners

GS-22



GS-23



GS-24



GS-25





THE PURPLE BOOK

FOURTH EDITION



The Purple Book
SCAN TO

GET A COPY! ↓

[Download here](#)



New Voices and New Approaches
for Accelerating an Inclusive Society

3RD - 4TH SEPTEMBER 2025

POLICY INNOVATION CENTRE



THE PURPLE BOOK

FOURTH EDITION

New Approaches
for Accelerating an Inclusive Society

SEPTEMBER 2025

POLICY INNOVATION CENTRE



Contact & Enquiries

Policy Innovation Centre (PIC)

Plot 1524, Cadastral Zone B08,
Jahi District, Abuja, Nigeria

Phone: **+234 (0)7047897958 | +234 (0) 9063664418**

Email: **Partnerships@policycentre.org**
Genderfoyer@policycentre.org

For partnership enquiries, speaker nominations, abstract submissions, and registration, please contact the GS-26 Secretariat via the details above or visit the official summit website.

